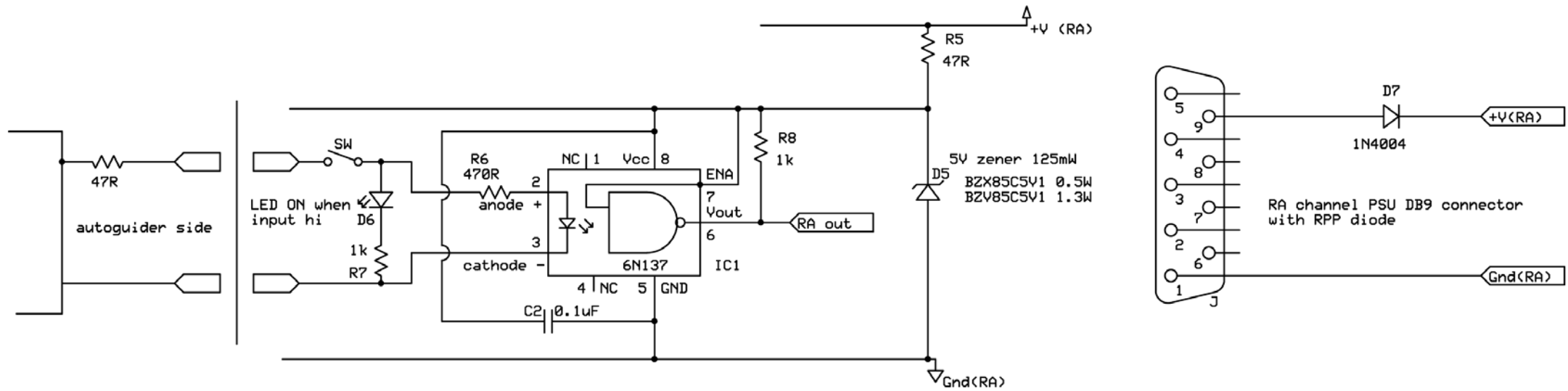
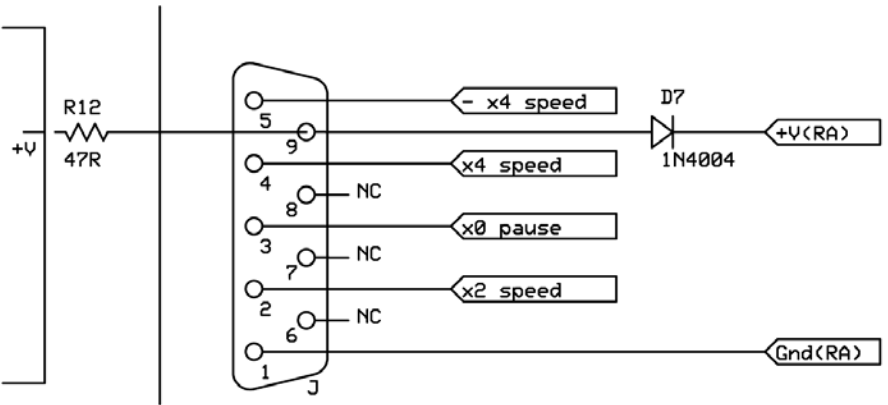
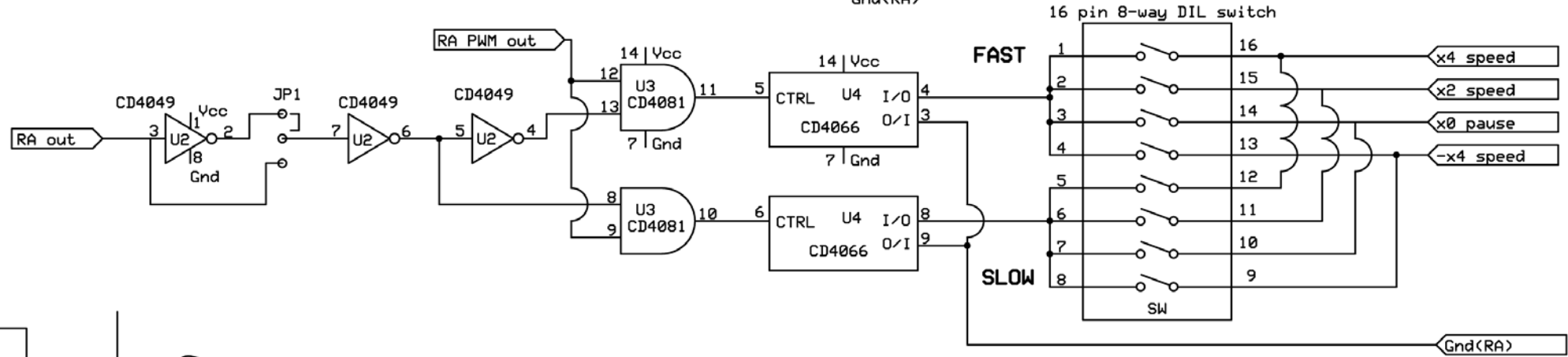
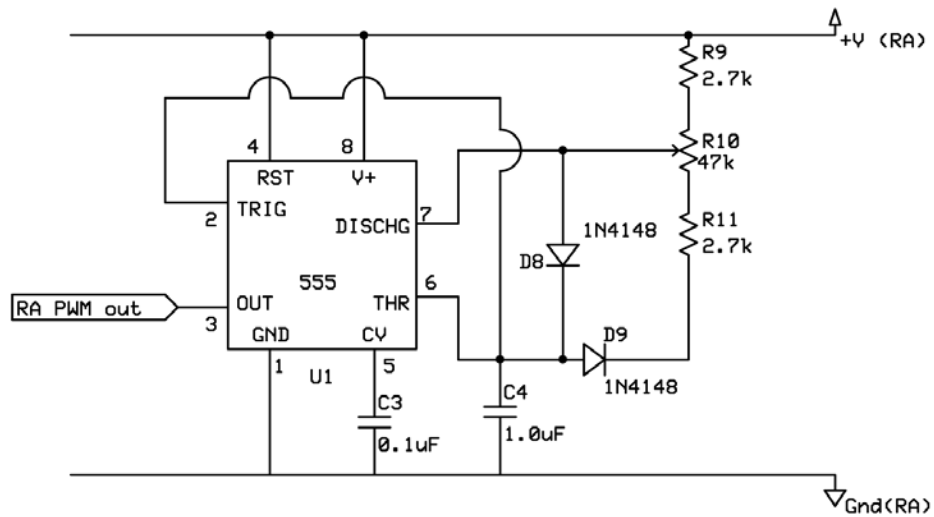


DEC autoguider connection with relay



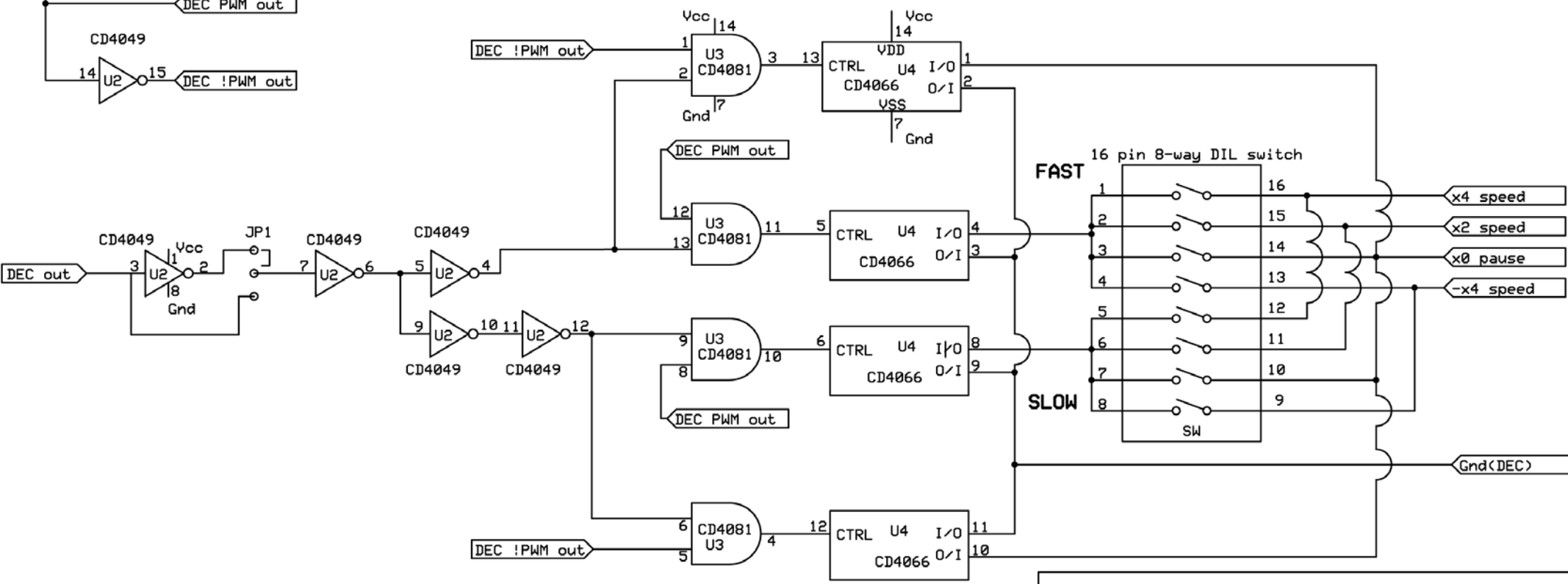
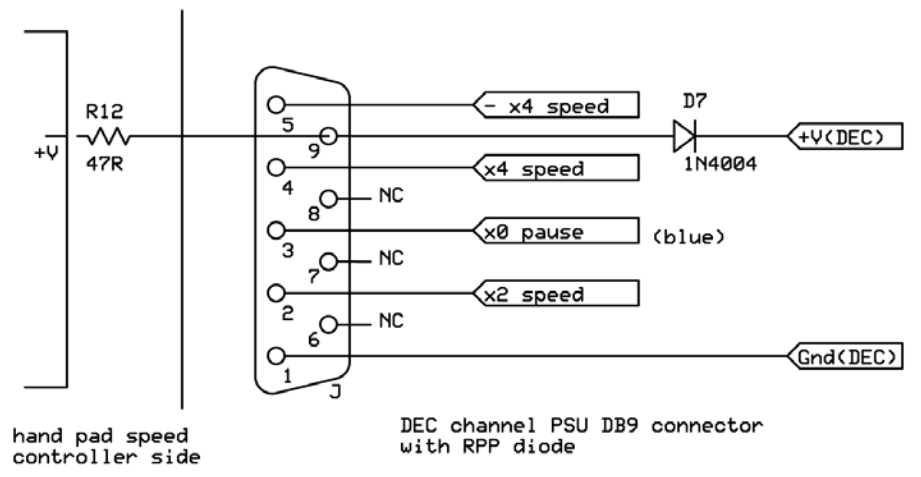
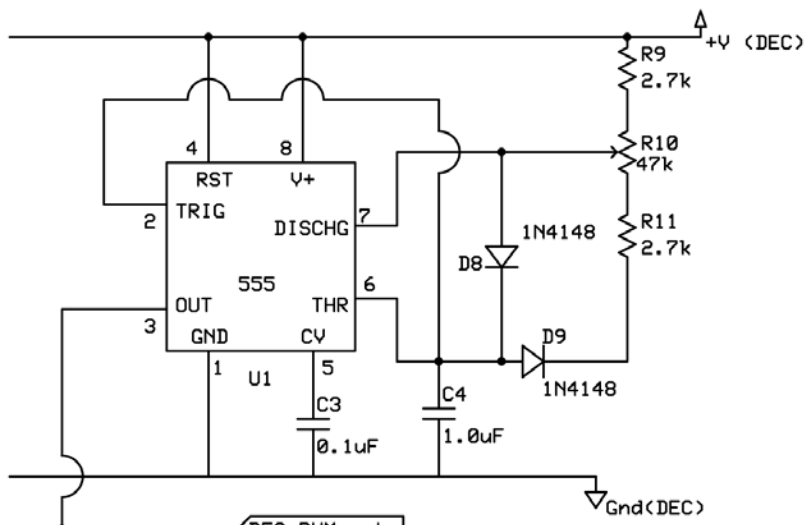
RA autoguider connection with 6N137 opto-isolator

## EQ2 drive corrector



RA channel PSU DB9 connector with RPP diode

hand pad speed controller side



**EQ2 drive corrector**

simon fedida	Rev 1.1	Page 3 of 4
	14/07/2013	

Component List:

RA Channel

1x 8-way DIL switch  
1x 6N137 optocoupler  
2/4 x CD4066 quad bilateral switch  
3/6x CD4049 hex inverter  
2/4x CD4081 quad AND gate  
1x LM555 timer  
1x BZX85C5V1 zener diode 5.1V 0.5W  
2x 1N4148 diode  
1x 1N4004 diode

DEC Channel

1x 8-way DIL switch  
4/4 x CD4066 quad bilateral switch  
6/6x CD4049 hex inverter  
4/4x CD4081 quad AND gate  
1x LM555 timer  
3x 1N4148 diode  
2x 1N4004 diode

Other

2x 47k potentiometer  
Assorted R, C and LEDs

<b>EQ2 drive corrector</b>		
simon fedida	Rev 1.1	Page 4 of 4
	14/07/2013	